

# Yallourn Declared Mine Rehabilitation Plan (DMRP)

Webinar

July 2025



**EnergyAustralia**

LIGHT THE WAY

# Acknowledgement of Country

We acknowledge that Yallourn stands on the traditional lands of the Braiakaulung people of the Gunaikurnai nation and acknowledge their living culture and connection to Country.

Artwork done by Wurundjeri Traditional Owners, Mandy Nicholson



# Webinar housekeeping



This session is  
being recorded



Q&A feature for  
questions



Be courteous and  
respectful

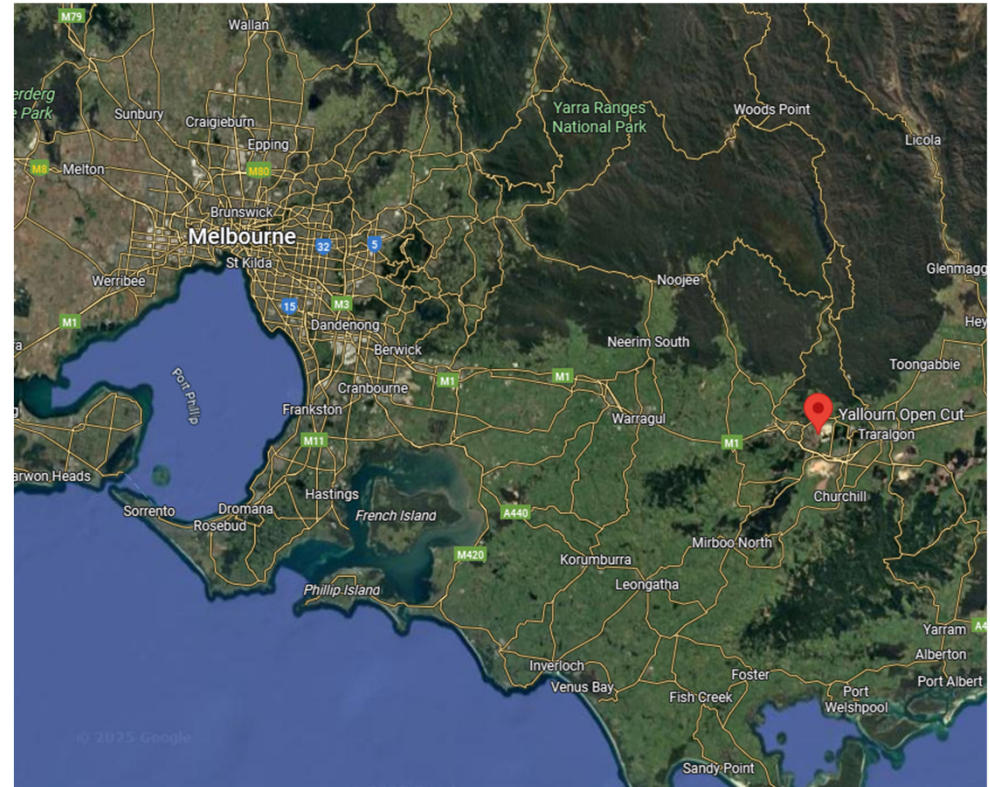
# Agenda

- Welcome and housekeeping
- Introduction to the Yallourn Declared Mine Rehabilitation Plan (DMRP)
- Historical context of the site
- Why a pit lake?
- DMRP key messages
- Community involvement
- Q&A

# Who are we?



- EnergyAustralia Yallourn (EAY) Pty Ltd operates the Yallourn Power Station and Mine in Victoria's Latrobe Valley.
- The site is located approximately 150 km south-east of Melbourne on the traditional lands of the Brayakaulung people of the Gunaikurnai nation.
- The Yallourn Mine and Power Station site has a long history with brown coal mining beginning in the Yallourn North Open Cut area in 1888.
- In March 2021 EnergyAustralia announced that the Yallourn Power Station was to cease operation in mid-2028, at which point the Yallourn Mine would also cease production



# Rehabilitation Vision Statement

*To transform the Yallourn site into a landscape that enables ongoing prosperity and amenity for all. One that is an example of what can be achieved when business, government, communities, and custodians of the land work together.*

This vision is centred on the transformation of the current pit voids into a lake which is capable of supporting recreational uses.



# What is the Declared Mine Rehabilitation Plan (DMRP)?

EnergyAustralia Yallourn Pty Ltd  
 Declared Mine Rehabilitation Plan  
 (June 2025)

Mining Licence  
 MIN 5003, MIN

**Table of Contents**

- Executive Summary .....4
- Abbreviations and Glossary .....6
- Chapter 1 Purpose .....23
- 1.1 Background .....23
- 1.2 General Overview.....
- 1.3 EnergyAustralia Values and Policies.....
- 1.4 Key Legislation and Administration.....
- Chapter 2 Scope.....
- 2.1 Introduction.....
- 2.2 Mining Licences.....
- 2.3 Timeframes.....
- 2.4 Exclusions.....
- Chapter 3 Project Overview and History.....
- 3.1 Introduction.....
- 3.2 History of Mining.....
- 3.3 History of Power Generation.....
- 3.4 EAY as Owner.....
- 3.5 Rehabilitation Concept and Approvals History.....
- 3.6 Government Policy and Decisions.....
- 3.7 Yallourn Mine Rehabilitation Overview.....
- Chapter 4 Regulatory Context.....
- 4.1 Legislative Framework for DMRP.....
- 4.2 Key Legislative Processes.....
- 4.3 Existing approvals.....
- 4.4 Future Approvals.....
- 4.5 Guidelines, policy and standards.....
- Chapter 5 Environmental Setting.....
- 5.1 Climate.....
- 5.2 Topography.....

Yallourn Declared Mine Rehabilitation Plan | 2025

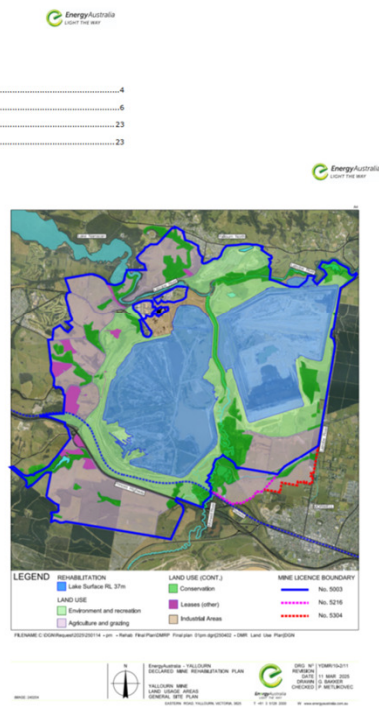


Figure: Progressive rehabilitation completed at East Field Extension Southern Batter

---

# Why is the DMRP important?

- **We have a legal obligation.**
  - In 2022, changes were made to the Mineral Resources (Sustainable Development) Act (MRSDA) which require declared mines to submit a DMRP to the Minister for Resources by September 30, 2025.
  - Yallourn is a declared mine per the Mineral Resources (Sustainable Development) Act
- **It requires public consultation.**
  - The MRSDA requires a 60-day public viewing period
  - EAY need to allow time to review submissions prior to final submission.
- **It gives us the certainty to progress rehabilitation planning and implementation.**
  - The lake has been approved for 30 years but still carries uncertainty.
  - Certainty is needed with closure three years away.

---

# Why is rehabilitation important?


Rehabilitation prevents future unsafe, unstable, and unsustainable conditions.

Rehabilitation enables the next beneficial land uses after mining.

Without rehabilitation, mines are fenced off and degrade their surrounding environment.

# The Historical Context

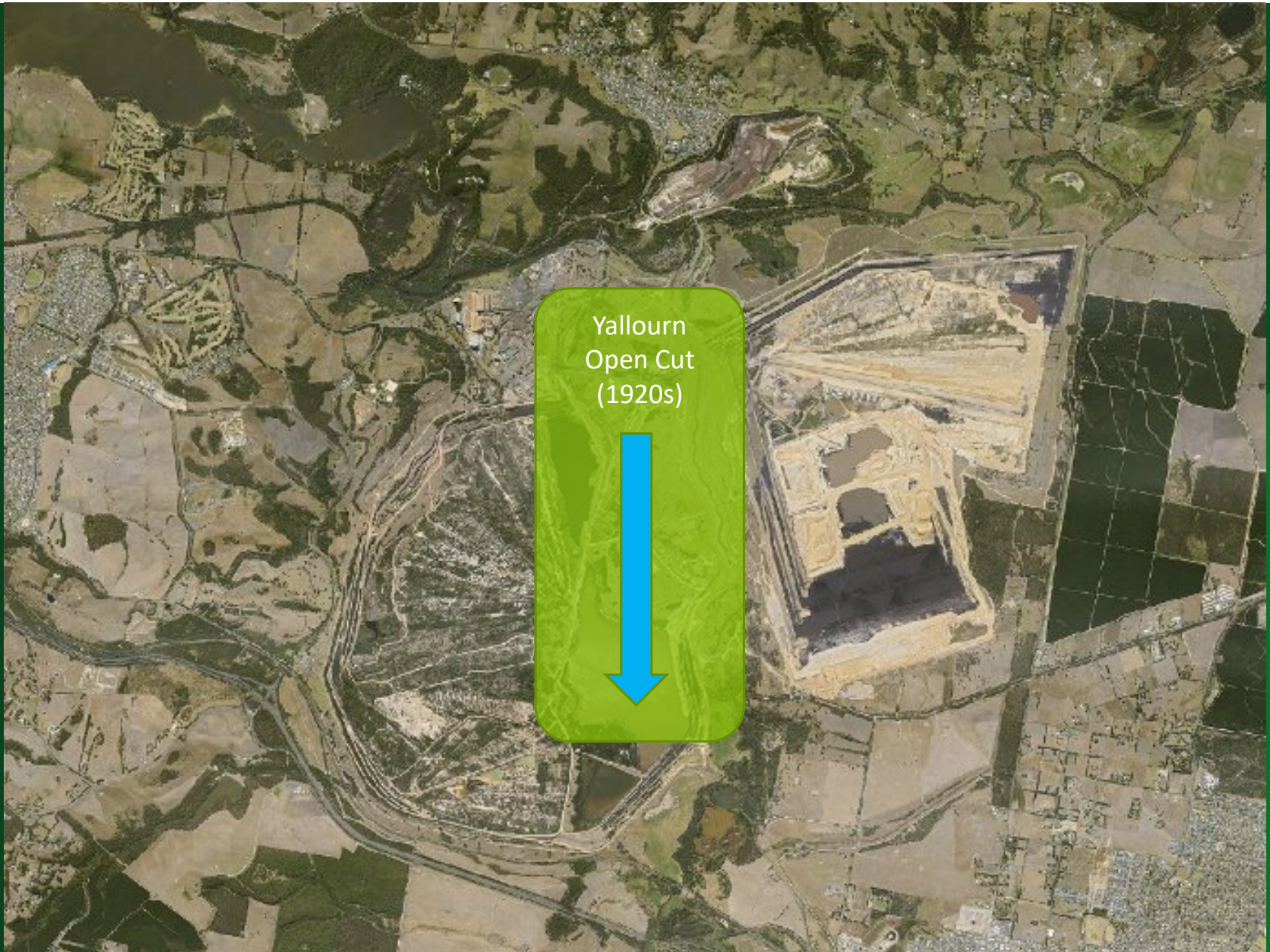
- Where we have mined
- How we have mined, and
- Major events and incidents;
- **All inform our rehabilitation plan**



Yallourn North Open  
Cut (1880s)







Yallourn  
Open Cut  
(1920s)

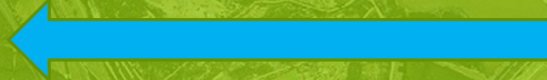






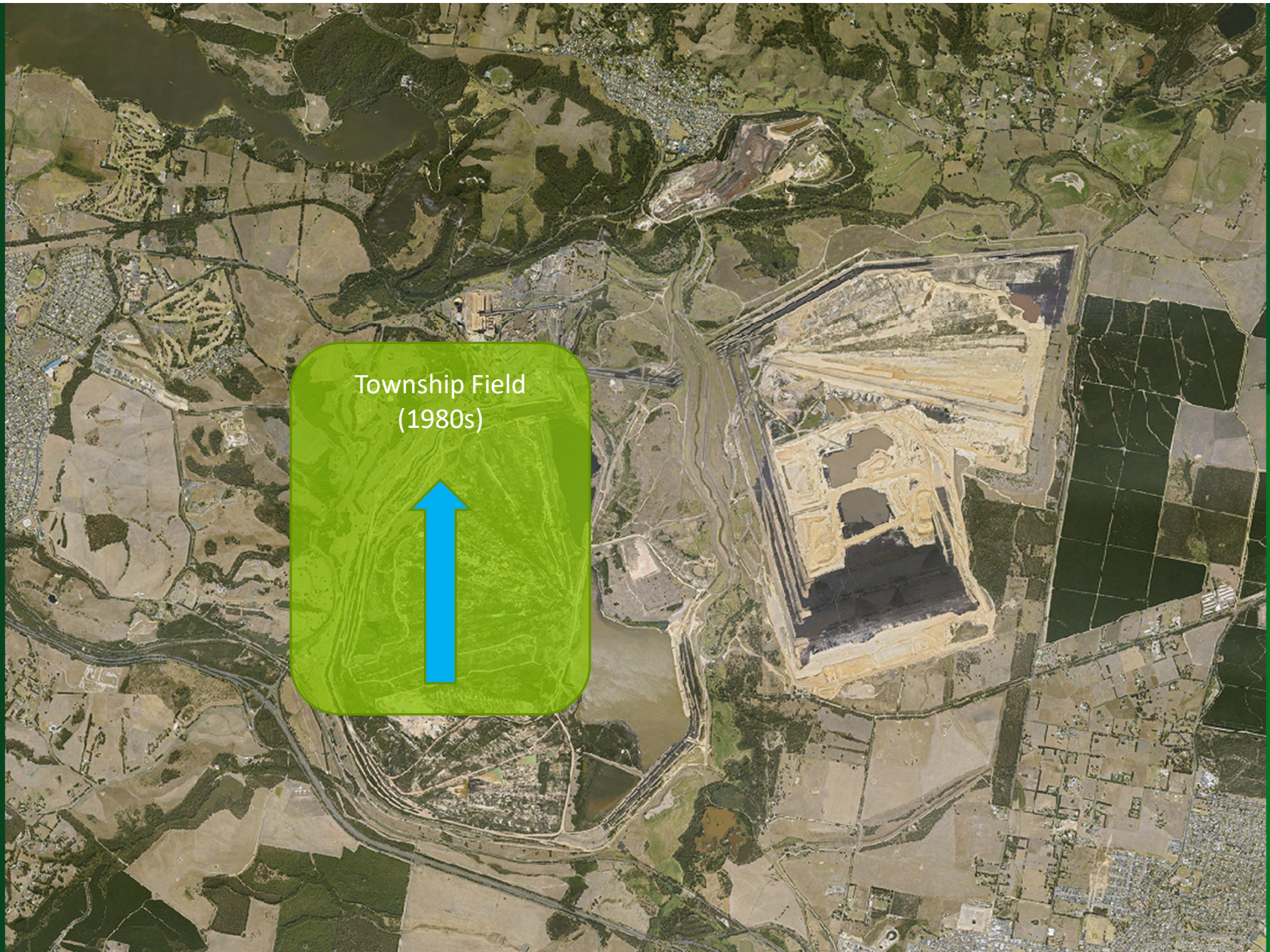


South Field (1960s)









Township Field  
(1980s)





Before Township Field (1974)

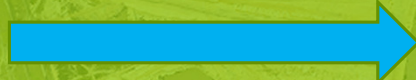


Township Field (1991)





East Field & East Field  
Extension (1990s)





Original Morwell River Alignment

1980s MRD - 3m Concrete Pipe

EASTFIELD

EASTFIELD  
EXTENSION

MARYVALE





Current MRD Commissioned in 2005









Maryvale Field  
(2010s)



Total Yallourn disturbance  
due to mining: 2,936 ha



---

## **A long history of mining disturbance**

- Mining has disturbed a lot of area.
- This disturbance presents many risks, especially in the geotechnical, environmental, and fire technical disciplines.
- Managing safe, stable, and sustainable conditions has proved challenging at Yallourn.

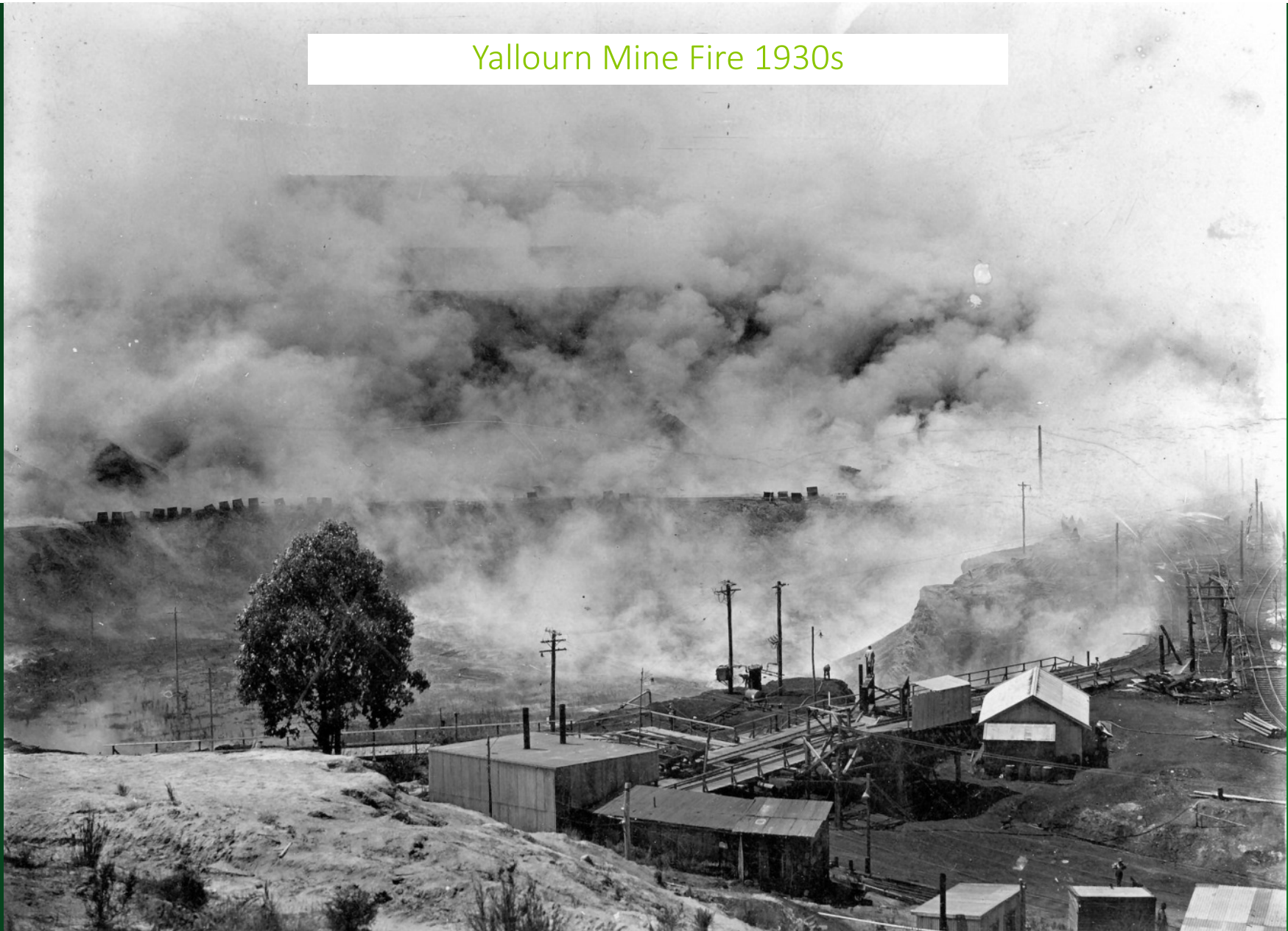
## Mine Flooding 1930s



## Geotechnical Failure 1950s



Yallourn Mine Fire 1930s



And more recently:  
Geotechnical Failure 2007



## Mine Flooding 2012 and 2013



## Mine Fire 2014

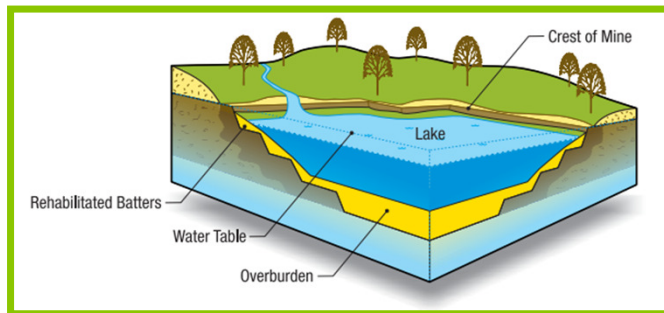


# Why a pit lake?

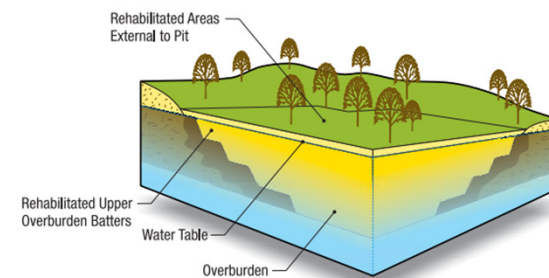
- A large disturbance area and history of events
- Stabilising the land
- Reducing fire risks
- Environmental restoration
- Recreational opportunities
- Passive control of risks

# Rehabilitation options

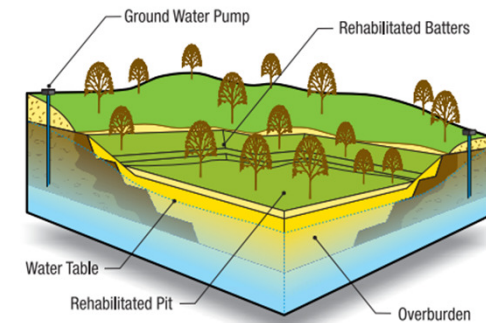
Pit lake



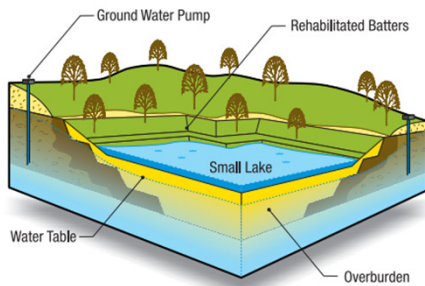
Full backfill



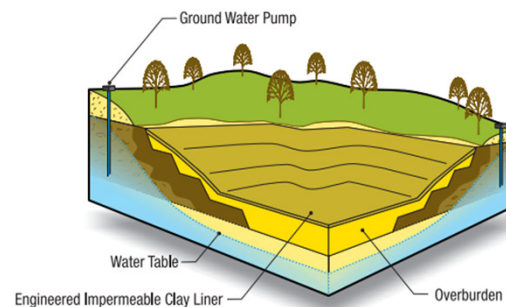
Partial backfill above the watertable



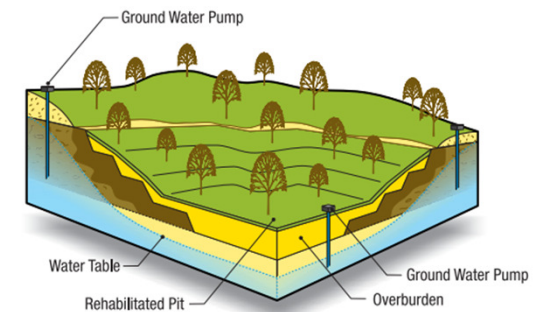
Partial backfill below the watertable

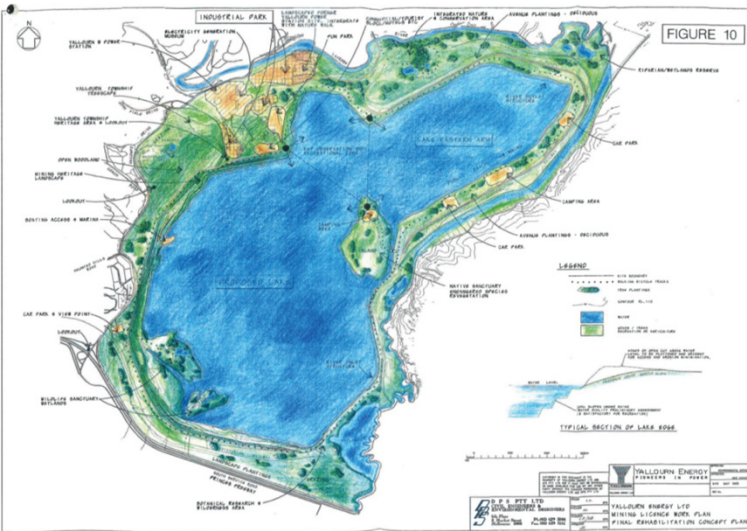


Lined void

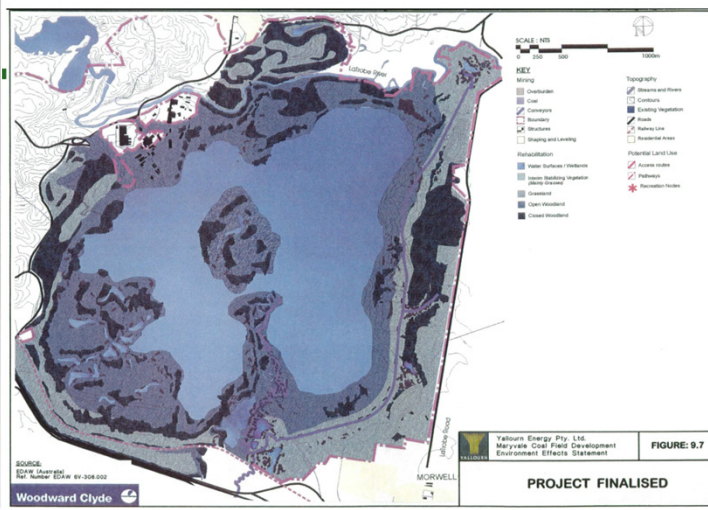


Rehabilitated void

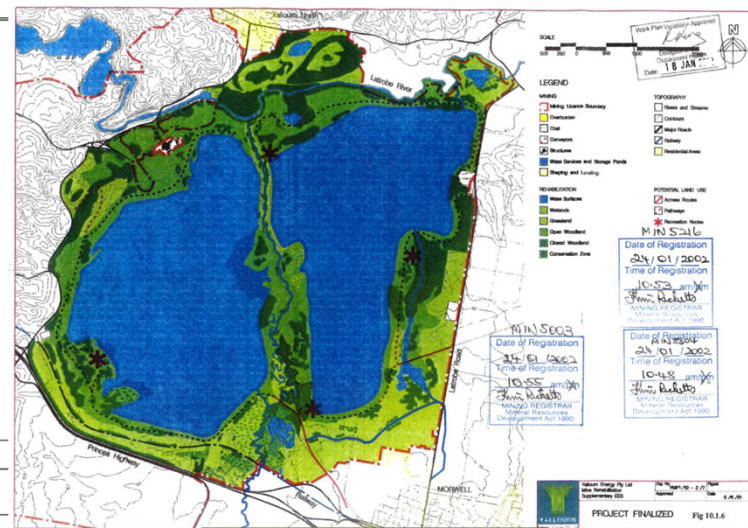




1996: SEC Plan

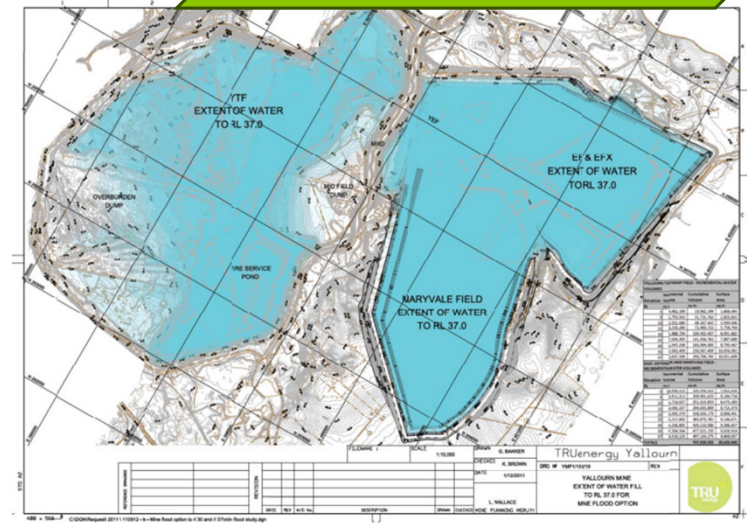


1999: EES

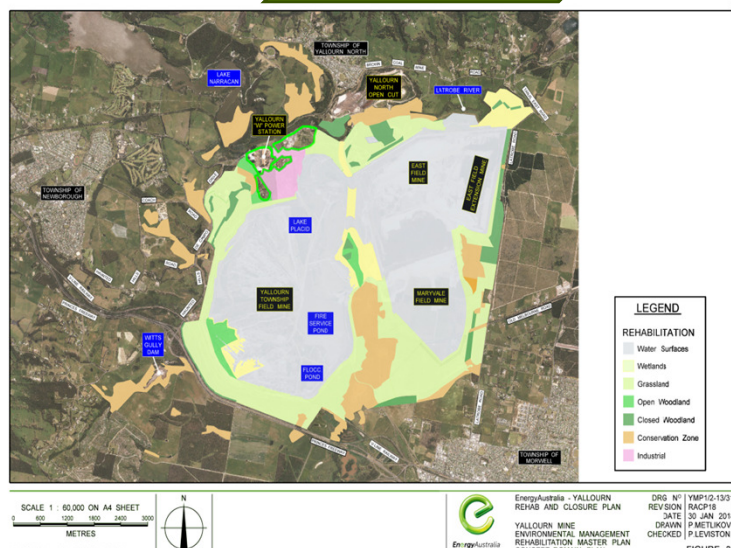


2002: Supp EES

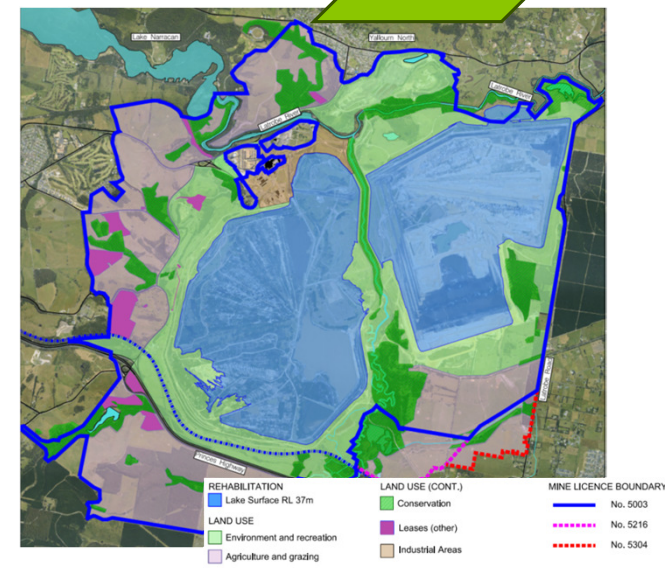
2010: Ministerial Assessment



2019: WPV



DMRP



# Assessment of pit lake rehabilitation benefits versus dry void

| Risk Event           | Pit Lake Rehabilitation Control  | Dry Void Rehabilitation Control  |
|----------------------|--|--|
| Flood overtopping    | Spillways from river to the mine are shorter and easier to manage                  | Larger spillways required and water to be pumped out after flood event |
| Mine fire            | Water stops fires from igniting and burning  | Capping is only partially effective, coal fire risk remains            |
| Geotechnical failure | Water balances the driving force within the slip surface (soil and rock mechanics) | Buttressing costs are extensive and risk remains                       |
| Mine flood           | No need to pump out water as we want a lake  | Water to be pumped out after flood                                     |

---

# Lake alternatives are not feasible in the long term at Yallourn

- The recently released LVRRS action 5 shows the difficulty and risk associated with dry voids and partial lakes.
- These rehabilitation solutions need extra maintenance and monitoring, and will likely collapse and/or catch fire in the long-term.
- The LVRRS (2020) states that lakes are the best option for long term stability providing water can be sourced.
- The LVRRS (2023) recommends conditions that could apply to accessing water for mine rehabilitation.

# Declared Mine Rehabilitation Plan Content

- Full DMRP – 486 pages
- Summary report – 37 pages
- Fact sheet – 4 pages
- Technical appendices

# DMRP Summary Document and Fact Sheet

- 37-page summary document highlighting the key messages of the DMRP
- A four-page fact sheet is also available providing a high-level overview.

## EnergyAustralia Yallourn Declared Mine Rehabilitation Plan fact sheet

EnergyAustralia's Yallourn Power Station and Mine operate on the lands of the Brayakaulung people of the Gunaikurnai nation. We acknowledge them as Traditional Owners and recognise their living culture and strong connections to their Country.

We are working to make the Yallourn site a place locals and visitors can enjoy and one that provides potential economic opportunities for the Latrobe Valley.

Yallourn has helped power the lives of Australians for over 100 years. EnergyAustralia is committed to honouring this proud history as we work towards closing the power station and coal mine in mid-2028.

### What is the Declared Mine Rehabilitation Plan?

The DMRP is our plan to make the mine site safe, stable and sustainable by filling the mine voids with water with a view to creating a lake that locals and visitors can enjoy and wildlife can call home. A lake was first proposed by the State Electricity Commission as the rehabilitation solution for the Yallourn mine in the early to mid-1990s. Since then, decades of further modelling and investigations by industry experts and EnergyAustralia Yallourn have supported this approach.

The draft DMRP covers a wide range of technical subject areas, including geology, groundwater, surface water, climate, floods, water quality, flora, fauna, cultural heritage, seismic activity, environmental impact, community views, and stability risks.

Plans for other parts of the site, including the power station, are still being developed.

### Why a lake?

Filling the mine voids with water to create a lake is the best rehabilitation solution. Some of the reasons why include:

- **Stabilising the land:** The water in the pit lake adds weight to the floor of the mine and the walls of the mine (known as "batters"). This weight is needed to counter the forces that cause ground movement.
- **Reducing fire risks:** Leaving the coal exposed could lead to increased fire risks. That's why a lake creates a natural barrier that could also help limit the spread of any fire from one area to another.
- **Recreational opportunities:** EnergyAustralia's aspiration is for the pit lake to be able to be developed into a recreational area, offering activities such as fishing, boating, and swimming. This can enhance the quality of life for residents and attract tourists to the local economy.
- **Environmental Restoration:** Transforming the site into a pit lake can help restore the local ecosystem. It can provide a habitat for aquatic life and attract various birds and other wildlife, contributing to biodiversity and enhancing the rehabilitation efforts that have already taken place at Yallourn.

Information current as at June 2025



## EnergyAustralia Yallourn Declared Mine Rehabilitation Plan

Mining Licences – MIN 5003, MIN 5216, MIN 5304  
Summary Document (June 2025)

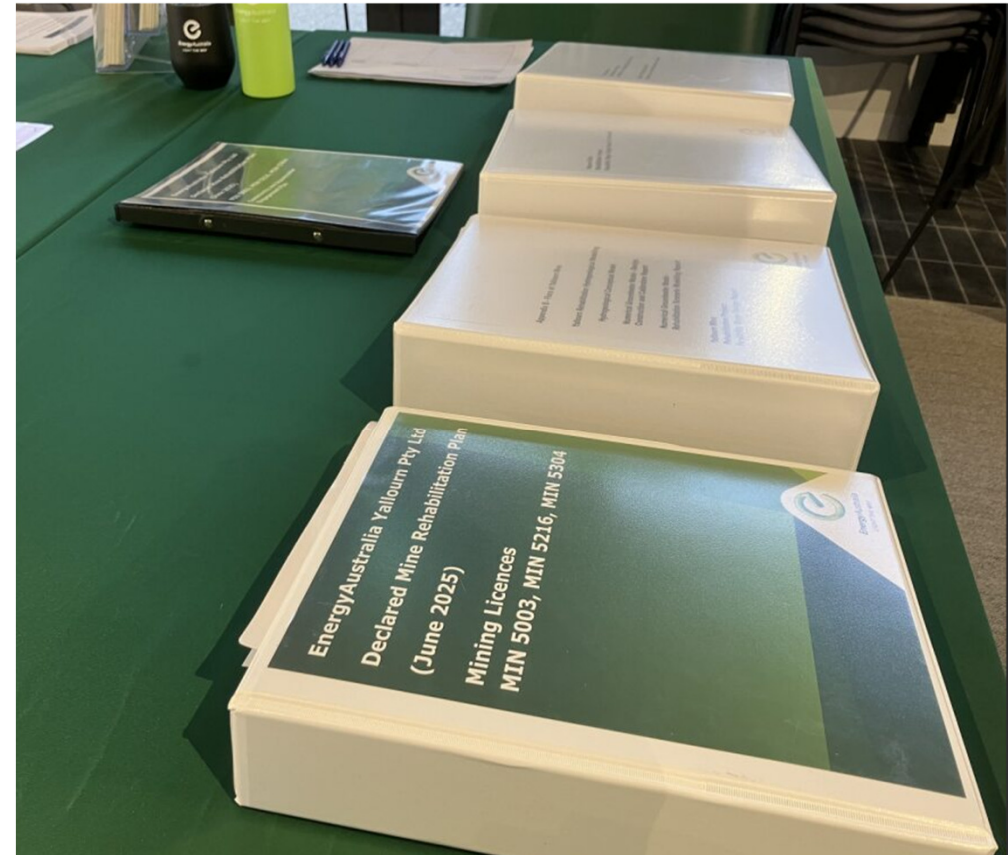


# DMRP and Summary Document Structure

| Chapter | Title                             | Chapter | Title                                |
|---------|-----------------------------------|---------|--------------------------------------|
| 1       | Purpose                           | 10      | Community and Stakeholder Engagement |
| 2       | Scope                             | 11      | Risk Assessment and Management       |
| 3       | Project Overview and History      | 12      | Activities and Design Considerations |
| 4       | Legal Obligations and Commitments | 13      | Closure Criteria                     |
| 5       | Environmental Setting             | 14      | Implementation Plan and Milestones   |
| 6       | Vision and Objectives             | 15      | Monitoring and Maintenance           |
| 7       | Progressive Rehabilitation        | 16      | Post Closure Plan                    |
| 8       | Technical Studies                 | 17      | Knowledge Gaps                       |
| 9       | Landform and Land Use             | 18      | Conclusion                           |
|         |                                   | End     | References and Appendices            |

# DMRP and Technical Study Documents

- The DMRP and supporting technical studies are available via:
  - Online – [www.transitionyallourn.com.au](http://www.transitionyallourn.com.au)
  - Hard copy at the EA Community Hub in Morwell



# DMRP Key Messages



# The water quality is capable of many uses

- Extensive water and soil testing has been completed to inform a water quality model.
- The water quality model report is available in Appendix C of the DMRP.
- Results from the model show good water quality capable for stock watering and recreational use.
- Some ecosystem protection limits are exceeded due to background Latrobe River quality



# Lakes are good for geotechnical stability

- Extensive geotechnical studies have been completed with findings shared in Chapter 8 and Appendix C
- Without geotechnical stability you can't safely reuse the land. Exclusion zones become a key part of the rehabilitation strategy.
- Lake water counteracts groundwater forces which can cause stability failures
- Lakes provide the best long-term stability with groundwater levels unable to materially change

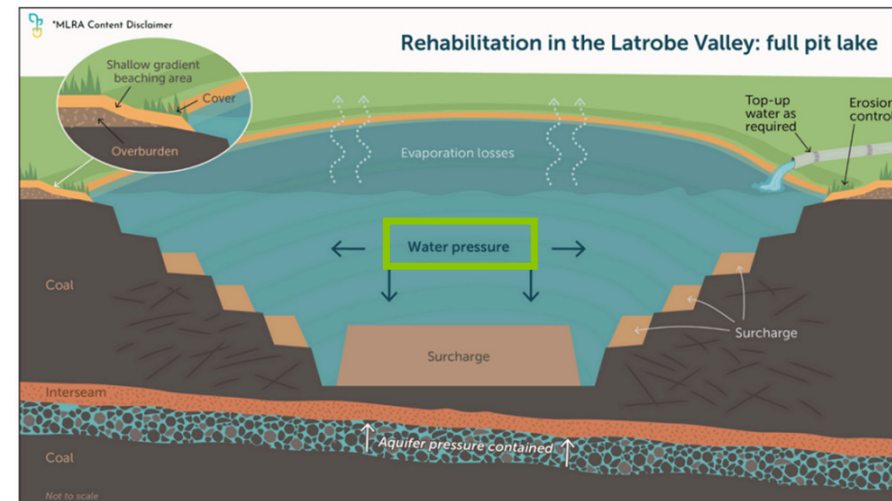
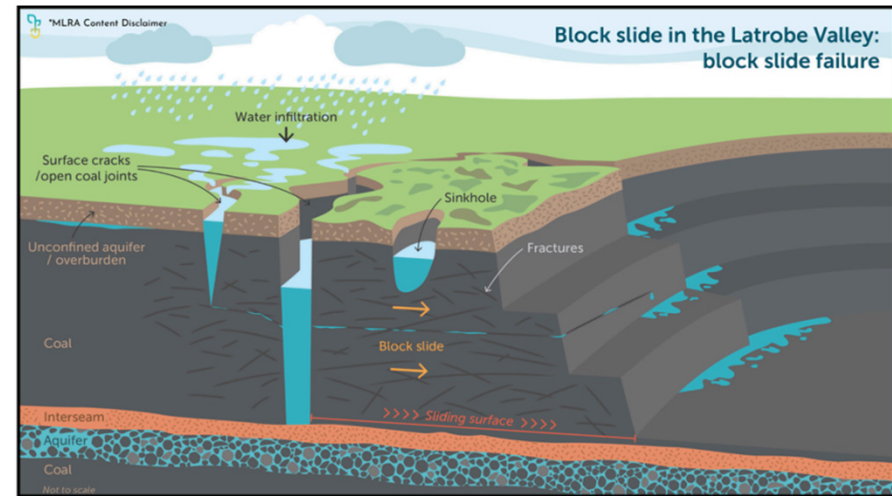


Image source: Mine Land Rehabilitation Authority (MLRA) *Key Hazard Series Fact Sheet: Block Sliding and Rehabilitation concept series: Full Pit Lake*. Fact sheets are available: <https://www.mineland.vic.gov.au/resource-library/fact-sheets>

# The Morwell River Diversion (MRD) can provide long term function with additional works

- The MRD is a 3km man-made river diversion connecting the Morwell River to the Latrobe River.
- Previous performance of the MRD has not reached design intent.
- New engineering studies propose a pathway to long term MRD stability.
- Works required include surface stabilization, spillway construction, levee reshaping, and stabilization from the lake itself.
- These works combined can protect the MRD and the river system from future failure.



---

## Beyond the lake, proposed land uses are consistent with current land uses

- Environment and Recreation
- Conservation
- Agriculture
- Commercial and industrial
- Existing community leases

We will continue to explore value add options above these nominated.



---

# Mine rehabilitation supporting works

- When the mine stops operating, existing risks do not disappear
- Maintain fire management and suppression systems (includes reconfiguration of current pump and pipe arrangements)
- Monitoring and maintenance activities continue as per current procedures and will be reviewed throughout the rehabilitation period



---

# Further approvals and work is still needed

The DMRP calls out many future licences and approvals required, including:


- Bulk Water Entitlement application
- Take and Use, and Construction Licences (Water Act)
- Potential Environmental Effects Statement referral

There is also further work planned to close out our nominated Knowledge Gaps.

# Community Involvement

---

## **DMRP Public Exhibition**

- Community feedback is valuable in shaping the rehabilitation plans.
  - Formal submissions during the 60-day exhibition period (until 18 August 2025) will be reviewed by EAY and incorporated into the DMRP where appropriate.
  - Early feedback provides EAY more time to review before submission of the DMRP.
- 

---

# DMRP Public Exhibition

The DMRP is available:

- Online: <https://www.yallourntransition.com.au>
- At engagement events
- In print:
  - EnergyAustralia Community Hub, 228 Commercial Road, Morwell. Open Tuesday and Wednesdays from 10am to 3pm
  - Local libraries in Moe, Morwell, Traralgon, Warragul, Mirboo North, Leongatha, Inverloch and Port of Sale. Please check opening hours.
  - Bairnsdale Corporate Centre, 273 Main Street, Bairnsdale.

# DMRP Public Viewing Webpage



Our draft [Declared Mine Rehabilitation Plan \(DMRP\)](#) is now open for public submissions until 18 August, 2025. A [summary](#) is also available.

We are working to deliver a final DMRP towards the end of 2025.

Plans for other parts of the site, including the power station, will be shared when they are developed.

## Learn More and Have Your Say

Find **printed copies** of the draft DMRP at:

1. EnergyAustralia Community Hub, 228 Commercial Road, Morwell. Open Tuesday and Wednesdays from 10am to 3pm
2. Local libraries in Moe, Morwell, Traralgon, Warragul, Mirboo North, Leongatha, Inverloch and Port of Sale. Please check opening hours.
3. Bairnsdale Corporate Centre, 273 Main Street, Bairnsdale.

To share your thoughts on the draft DMRP you can:

1. Email a submission to [EnergyAustralia Yallourn](#).
2. Call us on 1800 574 947.
3. Direct mail to our postal address: EnergyAustralia Yallourn, PO Box 444, Moe VIC 3825.
4. Complete a [short survey](#) (we estimate it will take between 2 and 5 minutes to complete).
5. Or talk to us at one of the events listed to the right.

## Or speak to us at one of the events below:

| Date               | Time           | Event   |
|--------------------|----------------|---|
| Saturday, 21 June  | 8am to 12pm    | <b>Sale Producers Market</b>  |
| Wednesday, 25 June | 11:30am to 5pm | The Mine Land Rehabilitation Authority 'Declared Mine Rehabilitation Plan and Key Legislation Information Session' Latrobe Valley GovHub, 65 Church St, Morwell |
| Saturday, 28 June  | 8am to 12pm    | <b>Traralgon Farmers Market</b>   |
| Sunday, 29 June    | 9am to 1pm     | <b>Stratford Market Day</b>   |
| Tuesday, 1 July    | 1pm to 2pm     | <b>Online webinar</b><br><a href="#">Register to attend</a>   |
| Saturday, 5 July   | 9am to 1pm     | <b>Trafalgar Farmers Market</b>   |
| Sunday, 6 July     | 10am to 2pm    | <b>Old Brown Coal Mine Museum, Yallourn North (Free Entry)</b>  |
| Thursday, 10 July  | 4pm to 5pm     | <b>Online webinar</b><br><a href="#">Register to attend</a>   |

# DMRP Public Viewing Webpage

Have Your Say — Yallourn Transit x +

https://www.yallourntransition.com.au/have-your-say

### Documents: Draft Declared Mine Rehabilitation Plan

|  |   |
|--|---|
| Summary of Draft Declared Mine Rehabilitation Plan                                     | - |
| This 37-page <u>summary</u> provides an overview of the key aspects of the draft DMRP. |   |
| Fact Sheet   | + |
| Full draft Declared Mine Rehabilitation Plan   | + |
| Appendices   | + |
| Public Notice  | + |

---


# Public Events

| Date                      | Time           | Event   |   |
|---------------------------|----------------|---|---|
| <b>Saturday, 21 June</b>  | 8am to 12pm    | Sale Producers Market   | ✓ |
| <b>Wednesday, 25 June</b> | 11:30am to 5pm | The Mine Land Rehabilitation Authority 'Mine Rehabilitation: The Future together", Latrobe Valley GovHub, 65 Church St, Morwell | ✓ |
| <b>Saturday, 28 June</b>  | 8am to 12pm    | Traralgon Farmers Market  | ✓ |
| <b>Sunday, 29 June</b>    | 9am to 1pm     | Stratford Market Day  | ✓ |
| <b>Tuesday, 1 July</b>    | 1pm to 2pm     | Online webinar  |   |
| <b>Saturday, 5 July</b>   | 9am to 1pm     | Trafalgar Farmers Market  |   |
| <b>Sunday, 6 July</b>     | 10am to 2pm    | Old Brown Coal Mine Museum, Yallourn North (Free Entry)   |   |
| <b>Thursday, 10 July</b>  | 4pm to 5pm     | Online webinar  |   |

# Q and A session

---

# Summary

- Rehabilitation transforms active mine areas into future land uses that meet safe, stable, and sustainable criteria.
  - A lake surrounded by recreation, conservation, and agriculture is the right plan for Yallourn.
  - New industry and value-add opportunities may arise for which the perimeter land is suitable.
  - The DMRP demonstrates why a pit lake is the right plan for Yallourn.
  - The 60-day public consultation on the DMRP is live and finishes on 18 August.
  - Public material includes a summary document, fact sheet, and technical studies.
  - After consultation, EAY will update the DMRP and aim to submit it on September 30.
- 

---

# Have Your Say

To share your thoughts on the draft DMRP you can:

**Email a submission to** [community.yallourn@energyaustralia.com.au](mailto:community.yallourn@energyaustralia.com.au)

**Call us** on 1800 574 947.

**Direct mail** to our postal address: EnergyAustralia Yallourn, PO Box 444, Moe VIC 3825.

**Complete a short survey**, available on the Yallourn Transition website (we estimate it will take between 2 and 5 minutes to complete).

Or **talk to us** at an event or at the EnergyAustralia Community Hub

Online: <https://www.yallourntransition.com.au>

